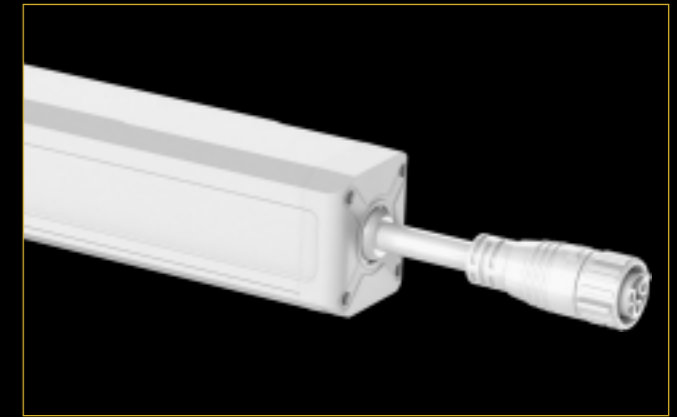


CULTIVADA

200W/300W 80R VEG BAR

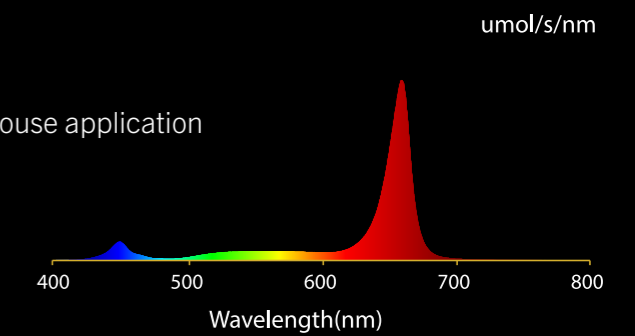


OTHER POINT OF VIEW



DESCRIPTION

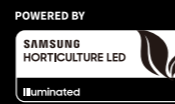
- High performance with PPE 3.2 $\mu\text{mol}/\text{J}$
- 200W/300W linear LED top light
- Great heat dissipation
- Compact & linear design for minimum shadow effect in a greenhouse application
- Simple and fast to install
- Compatible with controller
- 0-100% dimmable with controller (0-10V)
- IP66 Waterproof



SPECIFICATIONS

| Power | 200W | 300W |
|--------------------|----------------------------------|------------------------------|
| Light Source | Samsung 301H/301B & OSRAM | |
| PPF | 640 $\mu\text{mol}/\text{s}$ | 960 $\mu\text{mol}/\text{s}$ |
| Efficacy | 3.2 $\mu\text{mol}/\text{J}$ | |
| Input Voltage | 200V-277V / 277V-480V | |
| Input Current | 1A / 0.72A | 1.5A/1.08A |
| Fixture Dimensions | 1246*64*60.4mm/49.76"x 2.5"x2.5" | |
| Weight | 6.3kg/13.88lbs | 6.5kg/14.33lbs |
| Mounting Height | $\geq 6"$ | |
| Thermal Management | Passive | |

| Power | 200W | 300W |
|--------------------------|--------------------------|------|
| Dimming Option | 40%/50%/60%/80%/100%/OFF | |
| Light Distribution | 120° | |
| Lifetime | Q90: >54000hrs | |
| Power Factor | > 0.9 | |
| Waterproof Rate | IP66 | |
| Warranty | 5-year Warranty | |
| Temperature Ambient(Max) | 35°C/95°F | |



Unit 5 Riverside Industrial Park,
4 Koevoet Street, Kya Sands,
Johannesburg, South Africa, 2163

www.cultivadalighting.com
sales@cultivadalighting.com